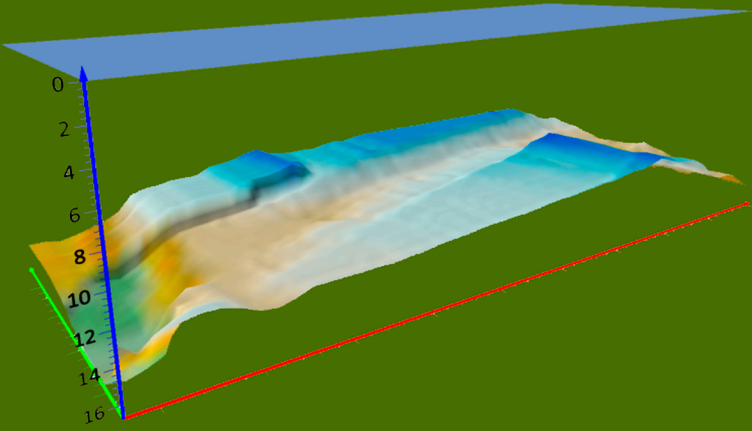




HERMES - 1

# Flood Mapper: Near Real-Time Impact Assessment

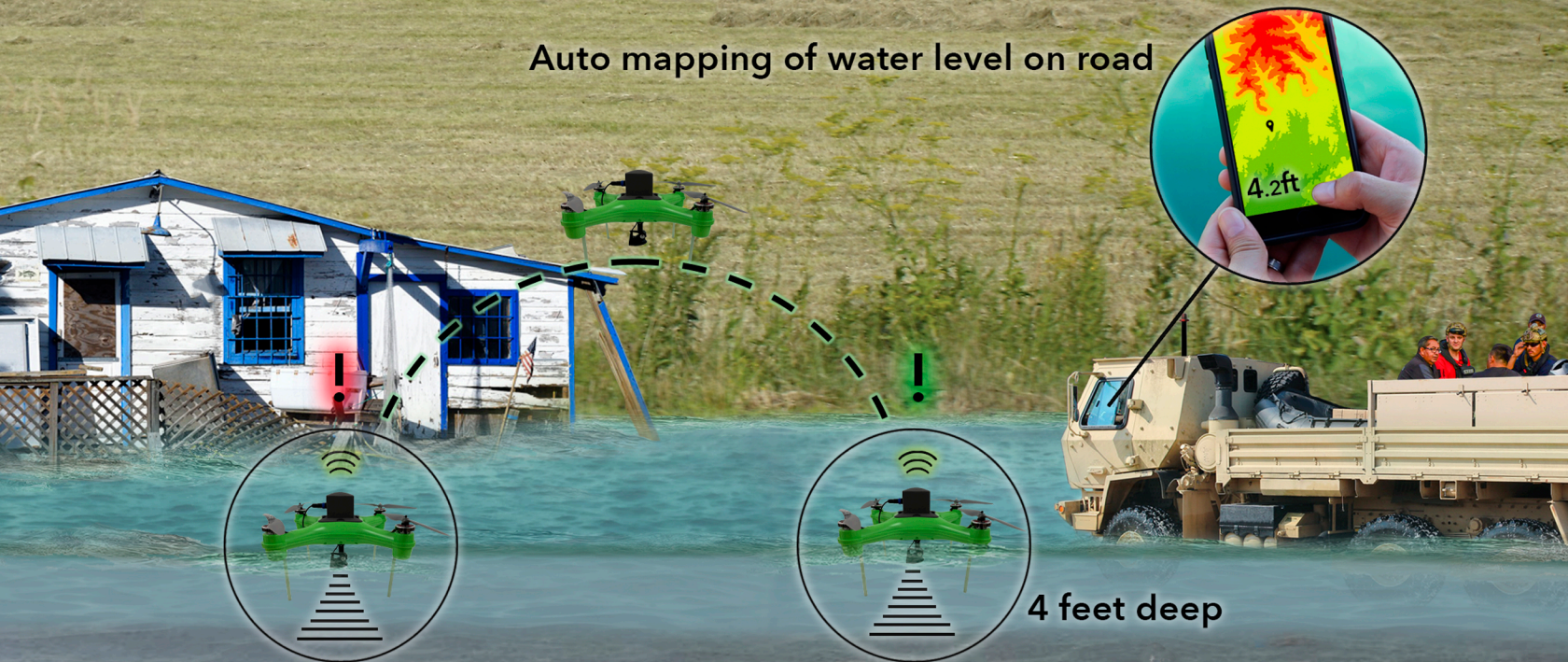
Graph & Depth Legend



For predictive modeling of evolving flood zones



Auto mapping of water level on road



Too deep for truck

4 feet deep



# HERMES - 1

## Flood Mapper: Near Real-Time Impact Assessment



### Specs:

Max Speed: 20mph

Vehicle Weight: 4.2lbs.

Depth Range: 1ft-328ft

Battery: 8000mAh, 16.8V

Sonar Frequency: 200kHz

Duration: 10min-30min (depending on usage and weather conditions)

Comms: 2.4 GHz - Multi-platform GUI application for mission planning

Distance Range: 3-10 miles (depending on usage and weather conditions)

### Key Features:

Made in USA

On-Board Data Reading

Water Temperature Reading

Unmanned Autonomous Operation

Low-Cost / Disposable Delivery Platform

User Friendly - Easy to learn, little training required

User specifies the altitude, waypoints, and landing location

Versatility - Amphibious UAV that can fly to inaccessible locations

Water Resistant - Fly rain or shine - Land on dry ground or on bodies of water

Items have been developed in part under the assistance of the U.S. Federal SBIR/STTR contract listed below:

N68335-21-C-0193



Hydronalix, Inc.  
1691 W. Duval Commerce Court  
Green Valley, AZ 85614  
520.203.8351  
[www.hydronalix.com](http://www.hydronalix.com)

